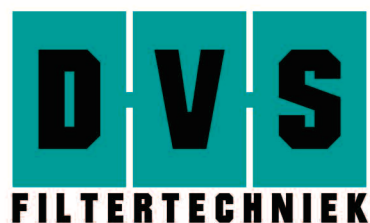
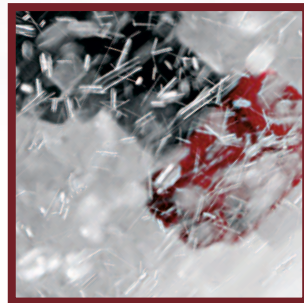
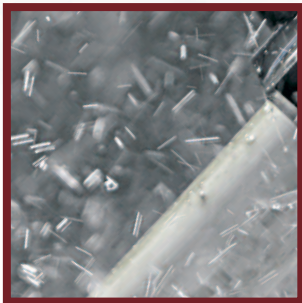


# PRODUCT CATALOG



“The closest step to  
PERFECTION  
in filtertechnology”





## Welcome to the world of professional Pond filtration!

In this booklet we, the DVS-crew, would like to introduce to you our range of professional filtration systems, developed for ponds, with of course, especially Koi ponds in mind.

DVS stands for “De Vijver Specialist”, translated in English it simply means “The Pond Specialist”. We are working in this field now for more than 20 years and brought our first DVS filters on the market in 2010.

Meanwhile our filters are working on hundreds of ponds in and outside Europe, with highlights on the German and English market. Our filters are, since last year, available in more than 20 countries worldwide. If you are looking for a distributor in your country, please feel free to contact us on the emailaddress, shown further in this catalog.

As said, our filters are running on hundreds of systems, worldwide, with an enormous positive feedback coming in from all users. Besides the quality we offer, this last point made Tsuyoshi Kawakami, the owner of the world renowned TORAZO KOI FARM, located in Niigata, Japan, decide to choose also for our systems. When you read this, Tsuyoshi san just finished his new greenhouse, including a big showpond, in which no less than 3 drumfilters made by our company, will be running and maintaining his water quality and his collection of amazing Koi!

We think there's no better way of promoting our products than this way! If one of the leading people in the industry, decides that this is the way he wants to “run” his newest greenhouse, than we can only be proud of ourselves!

In this catalog I would like to introduce your our complete range of models, starting with the ECO-drums. Ofcourse we have some “step-in” models, also for the smaller ponds and for those who have less possibilities or space. Or highlight model can however cope with 100 tons an hour... And can easily be put on ponds upto 200.000 liters of water, including fish! In between our ECO model and the Giant 100 ton model, we have a range of models, which will also come up to your needs and wishes.

So please have a look in this catalog, which will take you through all different models, and discover the Filtration World of DVS-Filtertechnology. We call it ourselves... “The closest step to PERFECTION in Filtertechnology”! Maybe it's time for you to find out why..!

Wishing you a great Pond season, with healthy water, beautiful fish and almost no maintainance! Discover the World of DVS-Filtertechnology!

**Patrick Clignet,**  
General Manager

**Filtration systems designed and developed with  
only one goal in mind:**

**Giving the pond keeper and hobbyist the ultimate tool to maintain  
their pond in the most easy and effective way,  
without making any concessions.**

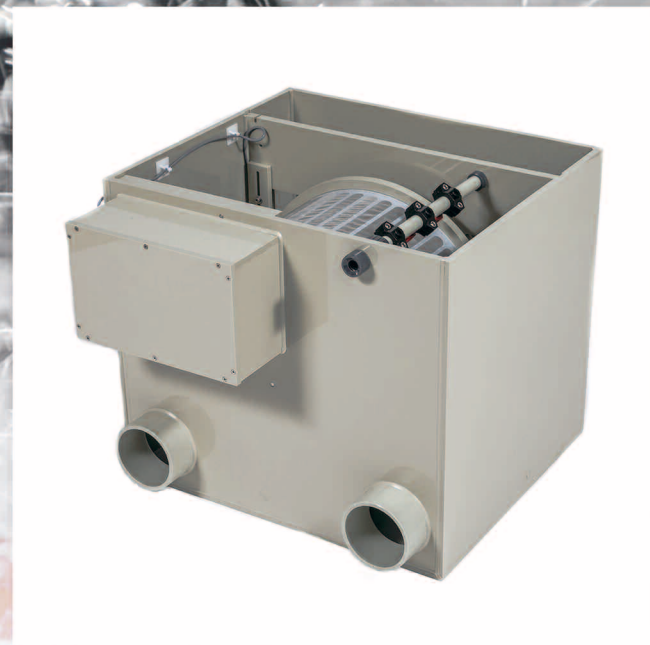
**We only use the best materials, putting them together with  
the newest and best techniques.**

**DVS Filtersystems can be seen as the BEST on the current market...**

**And we are more than proud of that!**

**It speaks for itself that all our models are CE approved!**





# ECO 15

## Specifications Eco 15 and Eco 22:

Standard flow is 15 m<sup>3</sup>/h or 22 m<sup>3</sup>/h  
Gravity / Airlift / Pump Fed  
Installation height 17 cm

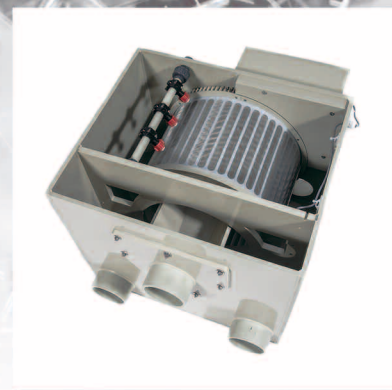
## Material:

Housing PP 10mm / 15mm PP Drum  
Stainless steel 316/304 / Silicone sealant

2 year warranty on all parts (ex. Sieve elements)

## Extra information:

You can use these drumfilters in combination with the biochambers BK60. A BK 60 is designed and equiped to use 100 liter of Helix (Bio-carrier). 100 Helix can break off 650 gr. of fishfood within 24 hours.



# ECO 22

## Specifications:

2 x 110 mm inlets  
2 x 110 mm outlets  
110 mm waste water drain  
Diameter of drum 40 cm x 40  
Strain Panel 75 microns SS316  
Removable waste water tank  
Spraybar with removable mounting, PVC pressure 40bar  
Cover  
Control box on filter  
Manual operation run / wash  
Rinse level adjustable  
Turn / flushing time adjustable  
All components built into modules and thus quickly interchangeable  
Comes with detailed instructions  
CE approved

Type Filter	Max Flow	Koi Pond	Fish Pond	Pond, no fish
ECO 15	15 m <sup>3</sup>	15 m <sup>3</sup>	15 m <sup>3</sup>	15 m <sup>3</sup>
ECO 22	22 m <sup>3</sup>	22 m <sup>3</sup>	44 m <sup>3</sup>	88 m <sup>3</sup>





# PP22

**Specifications PP 22 and PP35**  
 Standard flow is 22 m<sup>3</sup>/h or 35 m<sup>3</sup>/h  
 Gravity / Airlift / Pump Fed  
 Installation height 17 cm

**Material:**  
 Housing PP 15mm / 20mm PP Drum  
 Stainless steel 316/304 / Silicone sealant

**2 year warranty on all parts (ex. Sieve elements)**

**Extra information:**  
 You can use these drumfilters in combination with the biochambers BK 150. A BK 150 is designed and equiped to use 150 liter of Helix (Bio-carrier). 150 Helix can break off 1000 gr. of fishfood within 24 hours. Another possibility is to use this combination with a biochamber 450 or BK 100. these can be filled with 400 Liter Helix. This amount of bio carrier can cope with 2650 grams of fishfood on daily base!



# PP 35

**Specifications:**  
 Inlets where needed  
 Outlets where needed  
 Waste water agreement  
 Diameter of drum 40 cm x 40  
 Strain Panel 75 microns SS316  
 Removable waste water tank  
 Spraybar with removable mounting, PVC pressure 40bar  
 Cover  
 Control box  
 Manual operation run / wash  
 Rinse level adjustable  
 Turn / flushing time adjustable  
 Standard dry run protection for pond pump  
 All components built into modules and thus quickly interchangeable  
 Comes with detailed instructions  
 CE approved

Type Filter	Max Flow	Koi Pond	Fish Pond	Pond, no fish
PP 22	22 m <sup>3</sup>	22 m <sup>3</sup>	44 m <sup>3</sup>	88 m <sup>3</sup>
PP 35	35 m <sup>3</sup>	35 m <sup>3</sup>	70 m <sup>3</sup>	140 m <sup>3</sup>





# PP50

**Specifications PP 50 and PP 65:**  
 Standard flow is 50 m<sup>3</sup>/h or 65 m<sup>3</sup>/h  
 Gravity / Airlift / Pump Fed  
 Installation height 17 cm

**Material:**  
 Housing PP 15mm / 20mm PP Drum  
 Stainless steel 316/304 / Silicone sealant

2 year warranty on all parts (ex. Sieve elements)

**Extra information:**  
 You can use these drumfilters in combination with a biochamber 450 or BK 100. These can be filled with 400 Liter Helix. This amount of bio carrier can cope with 2650 grams of fishfood on daily base!



# PP 65

**Specifications:**  
 Inlets where needed  
 Outlets where needed  
 Waste water agreement  
 Diameter of drum 60 cm x 50  
 Strain Panel 75 microns SS316  
 Removable waste water tank  
 Spraybar with removable mounting, PVC pressure 40bar  
 Cover  
 Control box  
 Manual operation run / wash  
 Rinse level adjustable  
 Turn / flushing time adjustable  
 Standard dry run protection for pond pump  
 All components built into modules and thus quickly interchangeable  
 Comes with detailed instructions  
 CE approved

Type Filter	Max Flow	Koi Pond	Fish Pond	Pond, no fish
PP 50	50 m <sup>3</sup>	50 m <sup>3</sup>	100 m <sup>3</sup>	200 m <sup>3</sup>
PP 65	65 m <sup>3</sup>	65 m <sup>3</sup>	130 m <sup>3</sup>	260 m <sup>3</sup>





#### Specifications:

Inlets where needed  
 Outlets where needed  
 Waste water agreement  
 Diameter of drum 60 cm x 50  
 Strain Panel 75 microns SS316  
 Removable waste water tank  
 Spraybar with removable mounting, PVC pressure 40bar  
 Cover  
 Control box  
 Manual operation run / wash  
 Rinse level adjustable  
 Turn / flushing time adjustable  
 Standard dry run protection for pond pump  
 All components built into modules and thus quickly interchangeable  
 Comes with detailed instructions  
 CE approved



## PP 100

#### Specifications PP 100

Standard flow is 100 m<sup>3</sup>  
 Gravity / Airlift / Pump Fed  
 Installation height 17 cm

#### Material:

Housing PP 15mm / 20mm PP Drum  
 Stainless steel 316/304 / Silicone sealant

2 year warranty on all parts (ex. Sieve elements)

#### Extra information:

You can use these drumfilters in combination with a biochamber 450 or BK 100. These can be filled with 400 Liter Helix.  
 This amount of bio carrier can cope with 2650 grams of fishfood on daily base!

Type Filter	Max Flow	Koi Pond	Fish Pond	Pond, no fish
PP 100	100 m <sup>3</sup>	100 m <sup>3</sup>	200 m <sup>3</sup>	400 m <sup>3</sup>





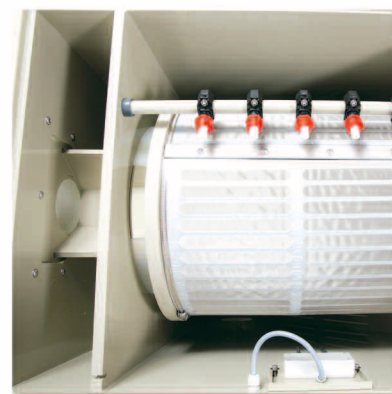
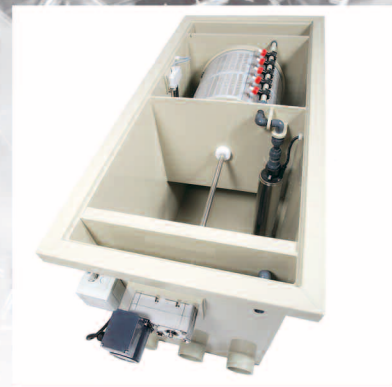
## CL 22

**Specifications CL 22 and CL 35**  
 Standard flow is 22 m<sup>3</sup>/h or 35 m<sup>3</sup>/h  
 Gravity / Airlift / Pump Fed  
 Installation height 17 cm

**Material:**  
 Housing PP 15mm / 20mm PP Drum  
 Stainless steel 316/304 / Silicone sealant

2 year warranty on all parts (ex. Sieve elements)

**Extra information:**  
 These combifilters have bio-rooms build in for either 100 or 150 liters of Helix. 100 liters of Helix can break down upto 650 grams of fish food on daily base. If you go for the CL 35 model, there's a bio room build in, designed for 150 liters of Helix, breaking down 1000 grams of Fish food daily.



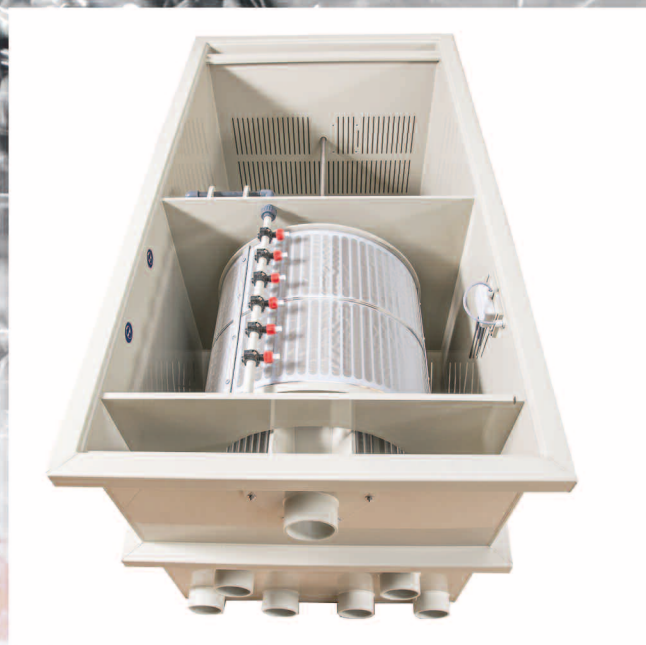
## CL 35

**Specifications:**  
 Inlets where needed  
 Outlets where needed  
 Waste water agreement  
 Diameter of drum 60 cm x 50  
 Strain Panel 75 microns SS316  
 Removable waste water tank  
 Spraybar with removable mounting, PVC pressure 40bar  
 Cover  
 Control box  
 Manual operation run / wash  
 Rinse level adjustable  
 Turn / flushing time adjustable  
 Standard dry run protection for pond pump  
 All components built into modules and thus quickly interchangeable  
 Comes with detailed instructions  
 CE approved



Type Filter	Max Flow	Koi Pond	Fish Pond	Pond, no fish
CL 22	22 m <sup>3</sup>	22 m <sup>3</sup>	44 m <sup>3</sup>	88 m <sup>3</sup>
CL 35	35 m <sup>3</sup>	35 m <sup>3</sup>	70 m <sup>3</sup>	140 m <sup>3</sup>





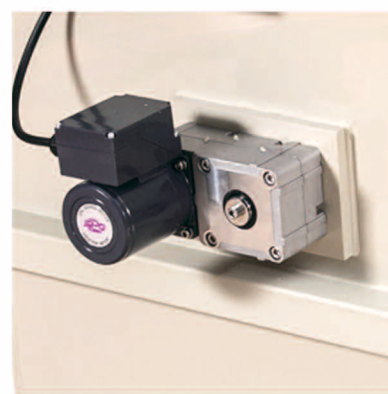
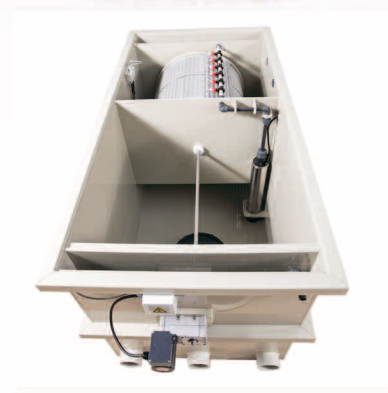
## CL 50

**Specifications CL 50 and CL 65**  
 Standard flow is 50 m<sup>3</sup>/h or 65 m<sup>3</sup>/h  
 Gravity / Airlift / Pump Fed  
 Installation height 17 cm

**Material:**  
 Housing PP 15mm / 20mm PP Drum  
 Stainless steel 316/304 / Silicone sealant

2 year warranty on all parts (ex. Sieve elements)

**Extra information:**  
 These combifilters have bio-rooms build in for 350 liters of Helix. 350 liters of Helix can break down upto 2275 grams of fish food on daily base.



## CL 65

**Specifications:**  
 Inlets where needed  
 Outlets where needed  
 Waste water agreement  
 Diameter of drum 60 cm x 50  
 Strain Panel 75 microns SS316  
 Removable waste water tank  
 Spraybar with removable mounting, PVC pressure 40bar  
 Cover  
 Control box  
 Manual operation run / wash  
 Rinse level adjustable  
 Turn / flushing time adjustable  
 Standard dry run protection for pond pump  
 All components built into modules and thus quickly interchangeable  
 Comes with detailed instructions  
 CE approved

Type Filter	Max Flow	Koi Pond	Fish Pond	Pond, no fish
CL 50	50 m <sup>3</sup>	50 m <sup>3</sup>	100 m <sup>3</sup>	200 m <sup>3</sup>
CL 65	65 m <sup>3</sup>	65 m <sup>3</sup>	130 m <sup>3</sup>	260 m <sup>3</sup>





# BK 60



# BK 150



# BK 450



# BK 100



These bio chambers come complete with in/outlets and one or two 32 cm supplied air disc. In/outlets can be placed where needed.

Type Filter	Max Flow	Max Helix
BK 60	35 m <sup>3</sup>	100 liters
BK 100	65 m <sup>3</sup>	500 liters
BK 150	35 m <sup>3</sup>	100 liters
BK 450	65 m <sup>3</sup>	450 liters

These bio chambers come complete with in/outlets and one or two 32 cm supplied air disc. In/outlets can be placed where needed.





## TF 60S

We also have two trickle filters in our gamma. Trickle filters are a great way for extra filter purpose. It gives your water that extra polished shine and of course it extends your filter capacity.

We have two models in our range, one which can handle a maximum flow of 35 M3, the bigger one can handle 65 m3. Put this within your system and you will have a filter capacity second to none.

We personally use Bacteria House as medium inside the trickles... So it's easy to understand that we advise...

Bacteria House!

## TF 100S



## CONTROL

Space for 2 or 3 detailshot of the App for the control unit and some extra text!

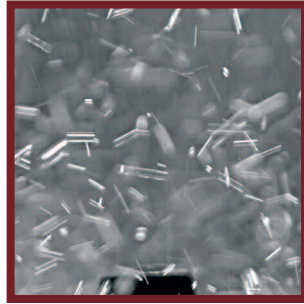


## UV UNIT

Type Filter	Max Flow	Max Helix	Bacteria House
TF 60S	35 m <sup>3</sup>	100 liters	60 kg
TF 100S	65 m <sup>3</sup>	200 liters	80 kg



*For more information, the latest view on our  
range, drawings with specifications and user  
manuals ready to download, please visit us at:  
[www.dvs-filtertechniek.com](http://www.dvs-filtertechniek.com)*



*DVS Filtertechniek  
Aan de Fremme 53b  
6269BK Margraten  
The Netherlands*

*[info@dvs-filtertechniek.com](mailto:info@dvs-filtertechniek.com)  
[www.dvs-filtertechniek.com](http://www.dvs-filtertechniek.com)  
+ 31 (0)43 3117032  
+ 31(0)6 26802500*