

DVS-Filtertechniek B.V.
Wiebachstraat 41
6466NG Kerkrade
The Netherlands
www.dvs-filtertechniek.com
info@dvs-filtertechniek.com



CONTROL MANUAL

v 2.1

ALL-IN-ONE SOLUTION FOR PONDS

- AUTOMATIC WASTE CLEANING
- AUTOMATIC REFILL SYSTEM
- TEMPERATURE MEASUREMENT
- HEATING SYSTEM CONNECTION



Index

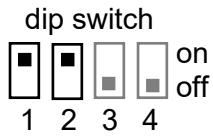
1	PRINT	3
	1.1 Set up print	3
	1.2 Options WiFi module	3
2	CONTROL MENU	4
	2.1 Main settings	5
	2.2 Forced cleaning	6
	2.3 ECO mode.....	6
	2.4 Waste chute cleaning (option).....	7
	2.5 Refill pond (option).....	8
	2.6 Temperature (option).....	9
	2.7 Cycle counters.....	10
	2.9 Technical settings.....	11
	2.10 SMS (option)	12
	2.11 SMS-Warnings.....	13
	2.12 Installing SMS module (option).....	14

1 Print

1.1 Set up print

Dip switch

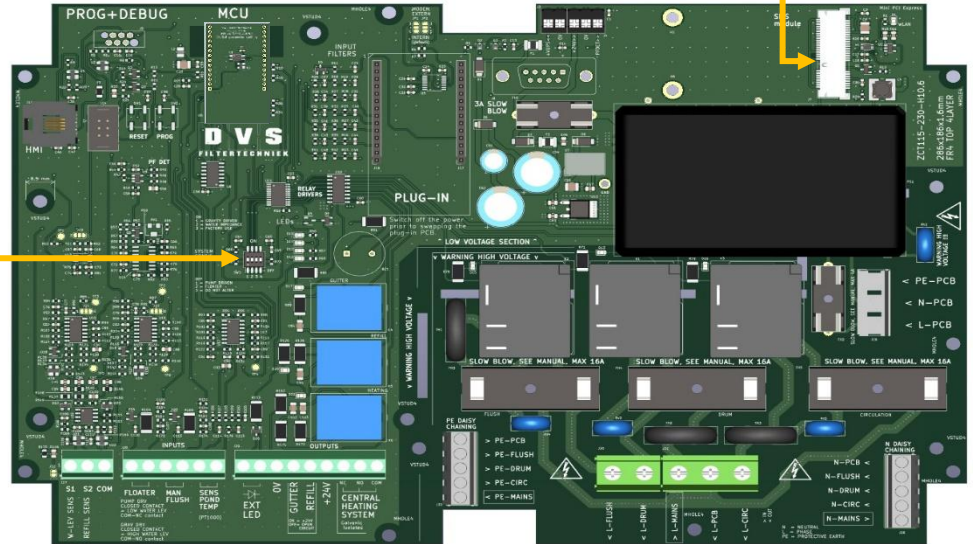
- 1 on → gravity
- 1 off → pump fed
- 2 on → sensor 2-pens
- 2 off → float switch



Change only takes effect after power cycling



SMS module

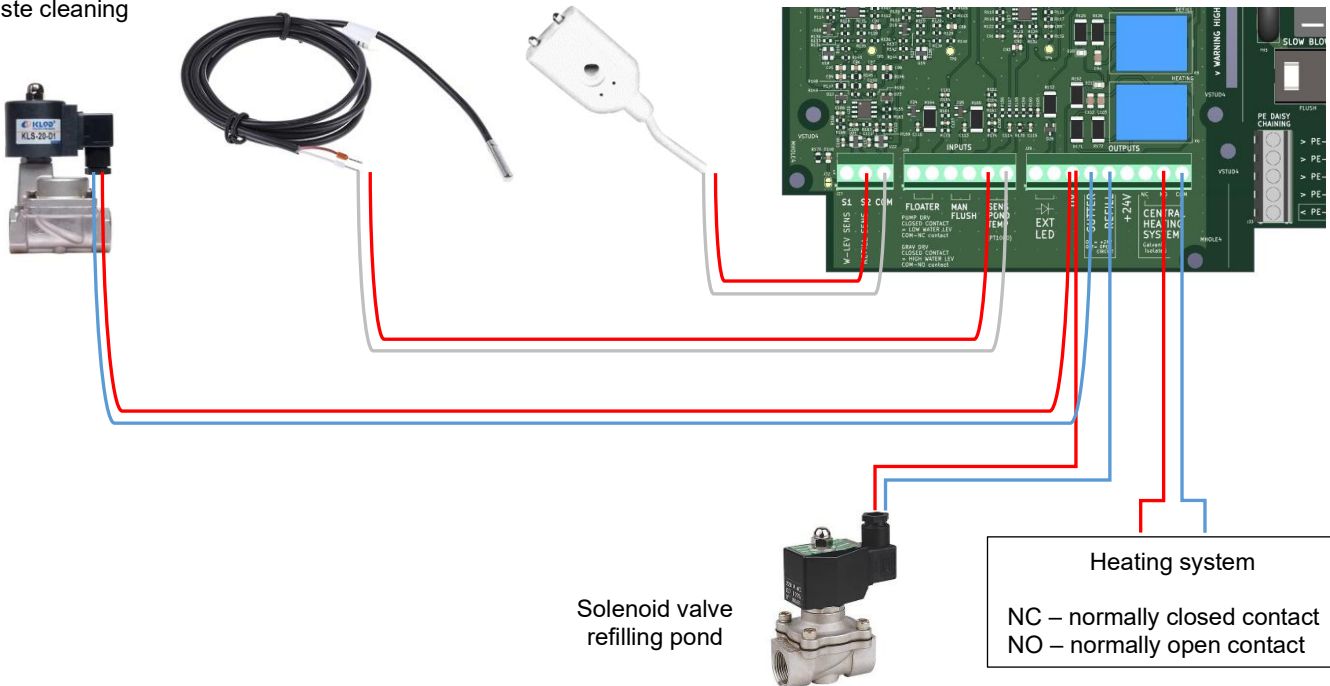


1.2 Options WiFi module

Solenoid valve waste cleaning

Temperature sensor


Sensor water refill



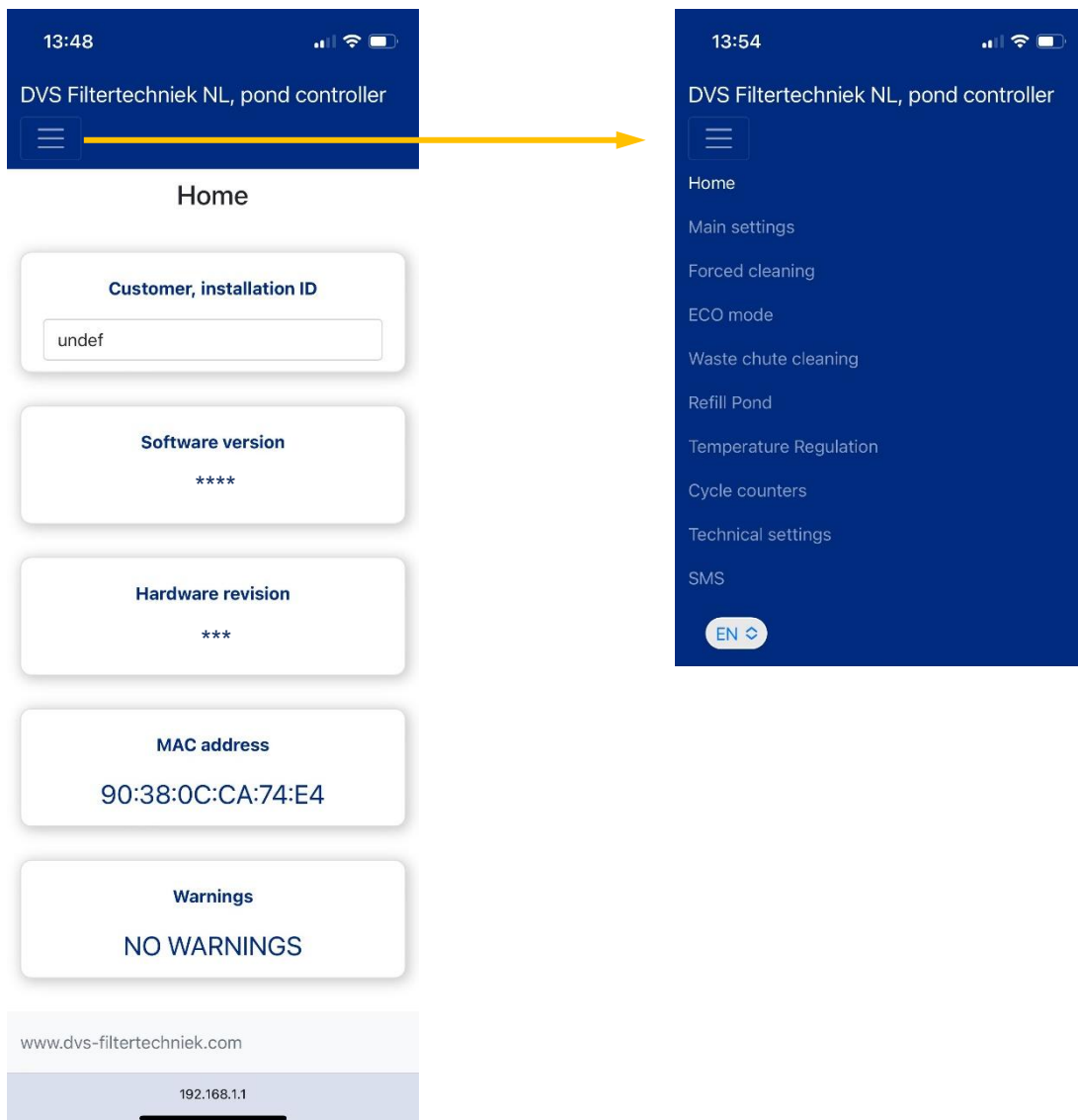
2 Control menu

Log in to WiFi module:
 Look for new networks : *DVS FILT*
 Password : *Welkom123456*

Go to an internet browser, for example
 Google Chrome or Safari (Apple)
 Type the following address in the address
 bar : *192.168.1.1*

By pressing the  button, you enter
 the various setting menus.

The screen below will then be seen



2.1 Main settings

Time after which the pond pump switches off. (dry-run protection)
 Delay to power off 2 - 300 sec

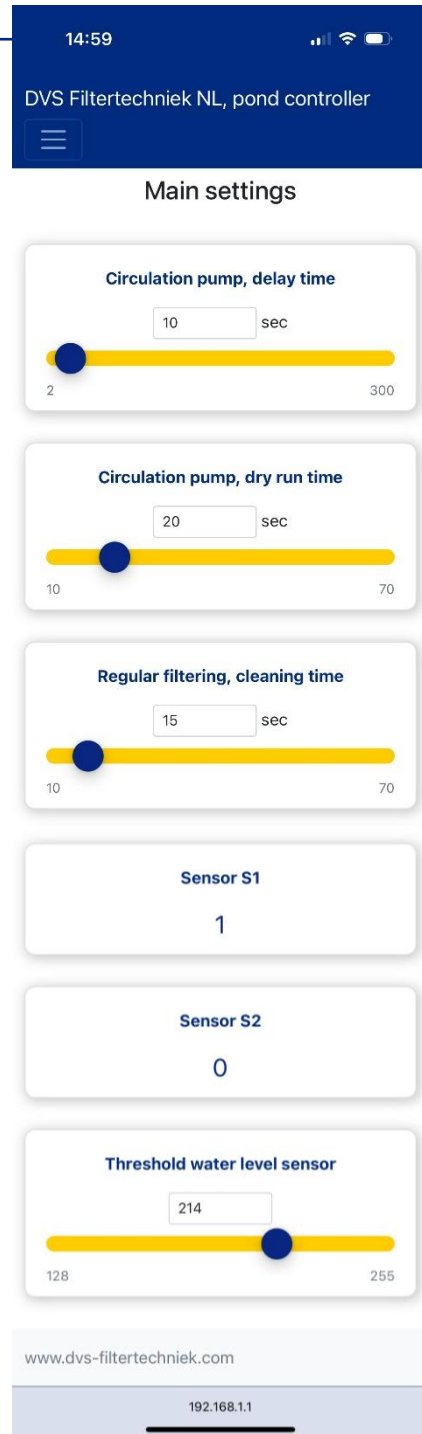
Time for the pond pump to stay off. (dry-run protection)
 Delay to power on 10 - 70 sec

Length of time the filter rinses.
 10 - 70 sec

Indicates whether the level sensor is in the water. 1 = in water, 2 = out of water.

Indicates whether the refill sensor is in the water. 1 = in water, 2 = out of water.

Sensitivity sensor
 Default value: 214



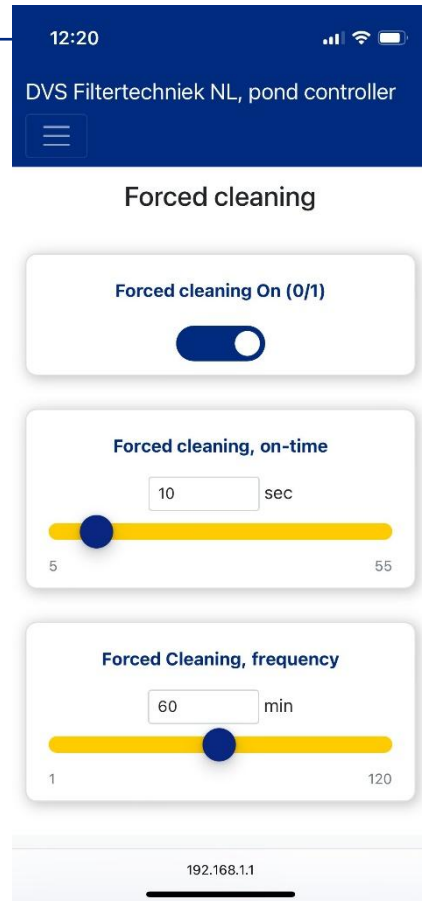
2.2 *Forced cleaning*

Here you can set the filter to rinse once every 60 minutes, for example.

Forced cleaning off / on.

Length of time the filter rinses.
5 - 55 sec.

Forced flush frequency.
1 - 120 min.
This should be set higher than the automatic rinse cycle.



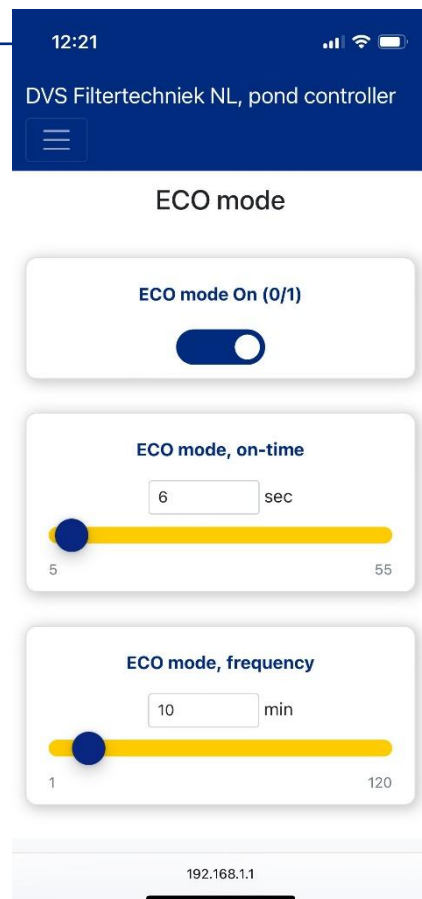
2.3 *ECO mode*

Because the drum rotates for the next rinse, the entire mesh is used, and water consumption will be reduced.

ECO mode off / on.

Length of time the drum rotates.
Default value 5 sec.
Does not need to be adjusted during normal use.

Frequency rotating drum.
1 - 120 min.
Does not need to be adjusted during normal use.



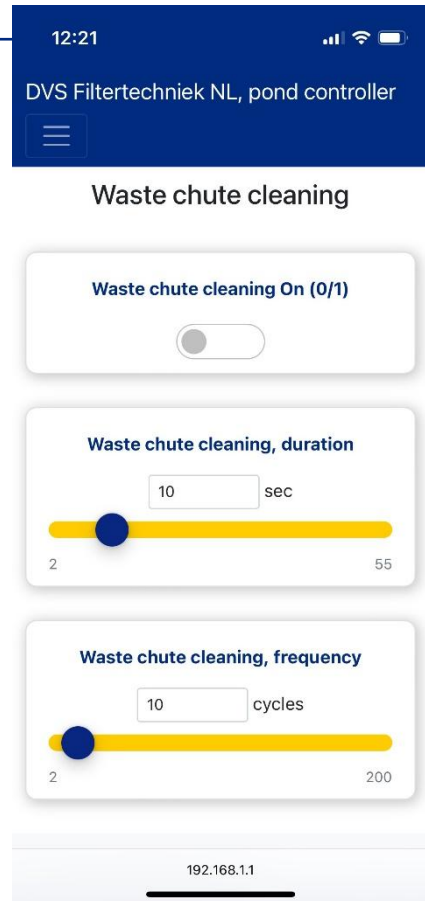
2.4 Waste chute cleaning (option)

If the filter is equipped with the automatic waste cleaning, this can be turned on and off here.

Waste cleaning off / on.

Length of time the gutter is flushed.
2 – 55 sec.

Frequency for how many drum cleanings the waste cleaning must be performed.
2 - 200 cycles.



2.5 Refill pond (option)

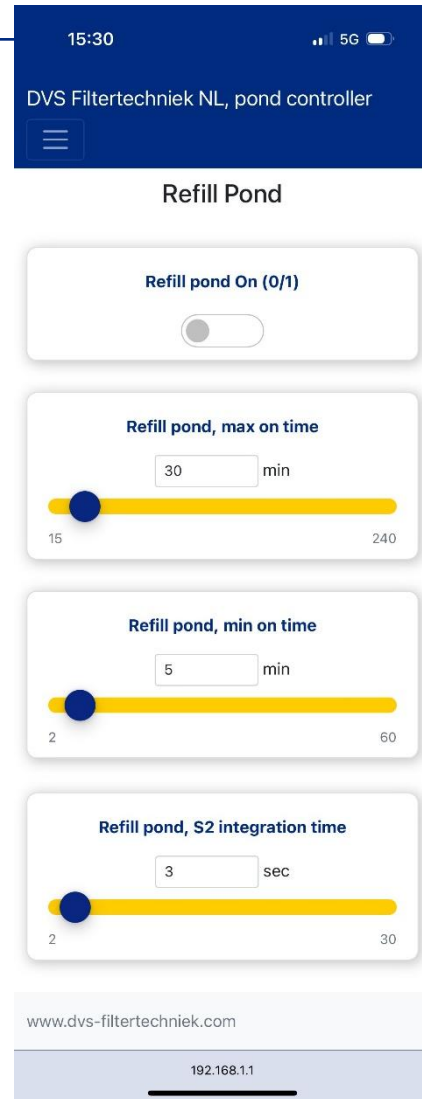
If the system is equipped with a pond refill system, this can be switched on and off here.

Refill pond off / on.

Error detection SMS option: if the water has not returned to the required level after the set time, an SMS will be sent to the telephone number entered in the SMS menu.

Min. length of time the pond is refilled.
(Min. time the tap is running)

Time until the refill valve opens after the sensor is removed from the water /
Time until the refill valve closes after the sensor is immersed in the water.
2–30 sec.



2.6 Temperature (option)

If the system is equipped with temperature control, this can be turned on and off here.

Temperature control off / on.

Desired water temperature.

Set 0,1 degrees.

Minimum time the system heats up.

Minimum time the system does not heat up. (prevent cycling of the heating system)

Temperature upper limit at which the system issues a message. (SMS module required)

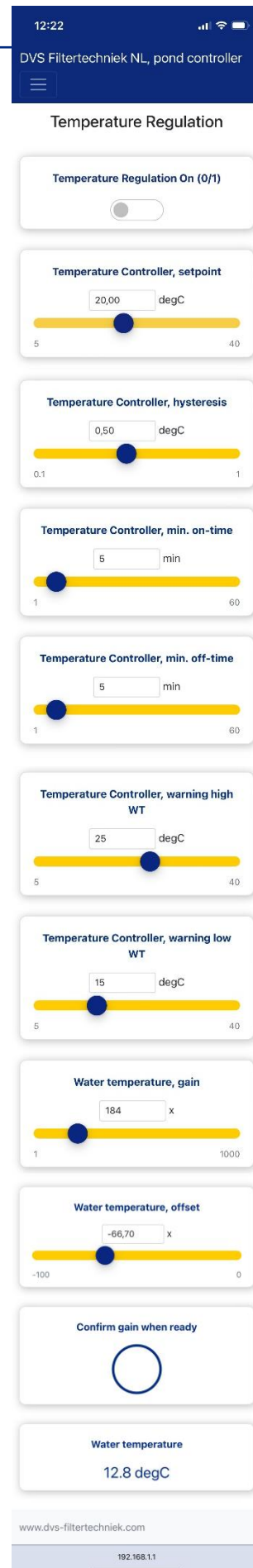
Temperature lower limit at which the system issues a message. (SMS module required)

Only for manufacturer

This allows you to calibrate the temperature display. This is factory-set. **Use only if you notice a deviation!**

If water temperature offset has been adjusted, confirm with this button.

Current water temperature



2.7 Cycle counters

Number of times the system entered dry-running protection.

Number of times the system entered dry-running protection in the past 24 hours.

Number of flushes the system has performed.

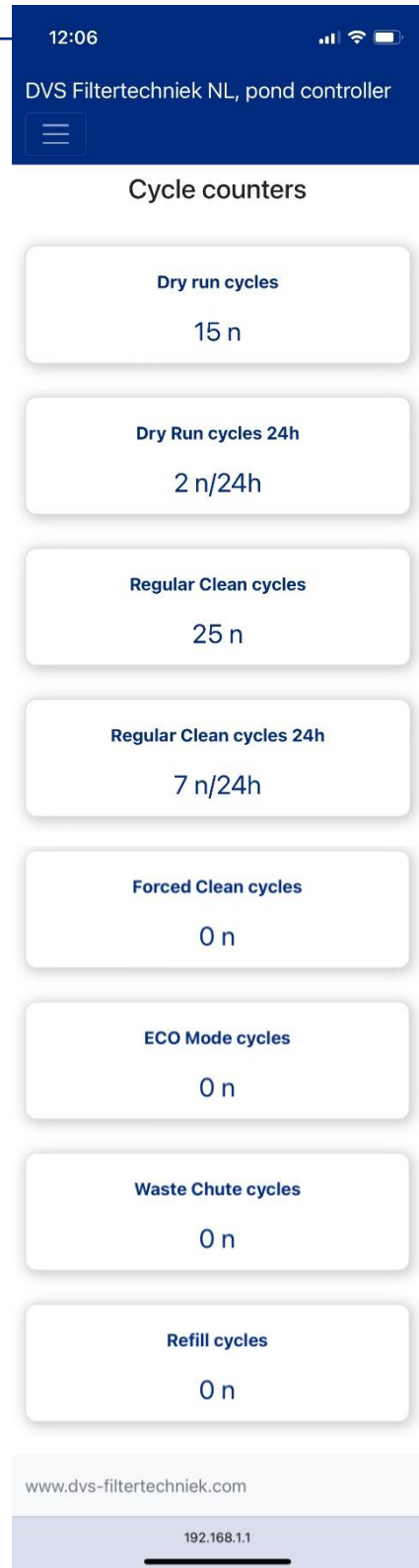
Number of flushes the system has performed in the past 24 hours.

Number of forced flushes the system has performed.

Number of ECO rinses the system has performed.

Number of waste cleanings the system has performed.

Number of times the pond has been refilled.



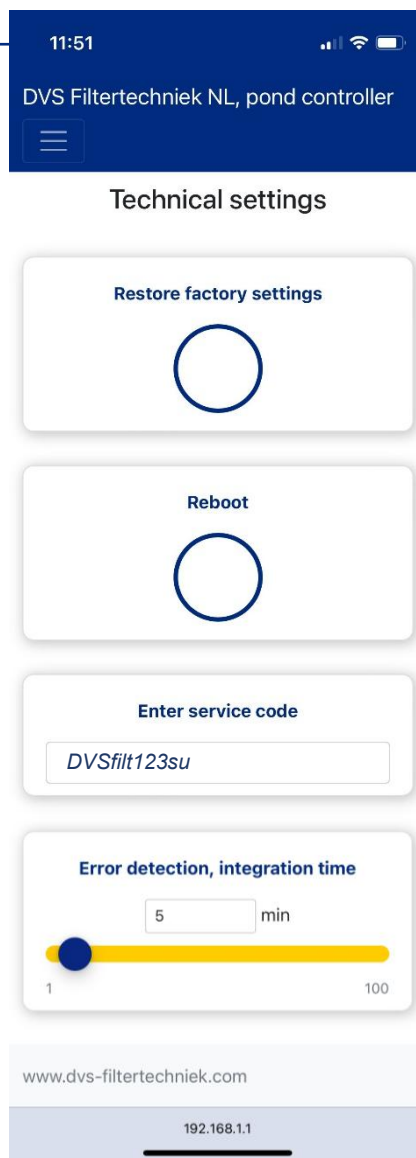
2.9 Technical settings

Reset the system to factory settings.

Restart control.

To set up the SMS menu, enter the service code: *DVSfilt123su*
(if SMS module is installed)

Duration after which a notification (SMS) is sent.



2.10 SMS (option)

To set up the SMS menu, enter the service code in the *technical settings*:
DVSfilt123su

Phone number where messages should be sent.

Sends a test message to the entered phone number.

Information

Enter PIN code.

If necessary, enter PUK code.

When the SMS menu is completely filled in, press: *Confirm PIN & PUK when ready*

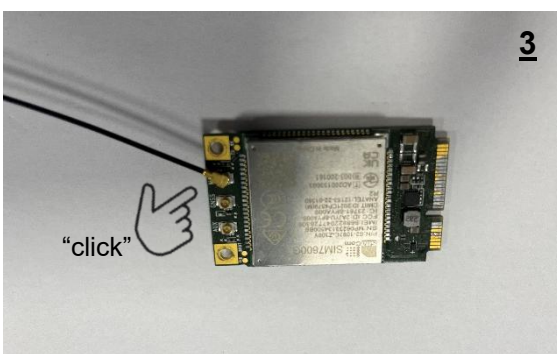
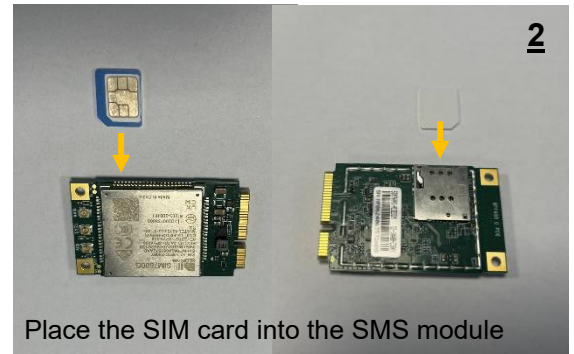
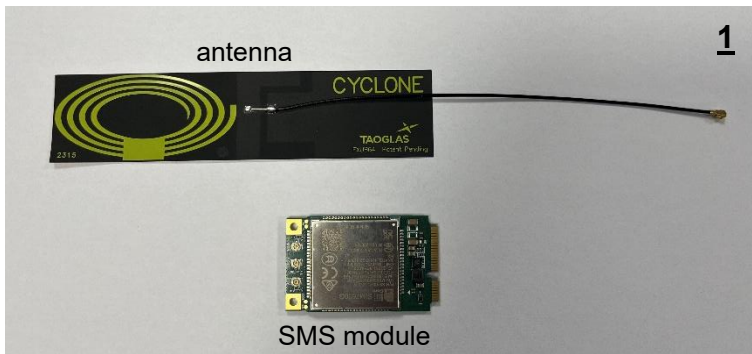
2.11 *SMS-Warnings*

In order of priority (from highest to lowest), the following warnings exist:

- Power failure
(only possible when using a UPS)
- Circulation pump stopped
- Water temperature too high
- Water temperature too low
- Refilling takes too long
- Test message

A similar SMS warning is repeated every hour if not resolved.

2.12 Installing SMS module (option)



Press the antenna connector onto the SMS module until you hear a “click”

